

OPPORTUNITIES

There are a variety of opportunities such as helping with flowers, trees, park clean up, painting, raking, mulching and litter removal.

WHO

Youth, teens, adults, older adults, families - all ages may volunteer!

COMMITMENT

There are various levels of commitment. Volunteers are encouraged to pick the level which they will be able to follow through with and be consistent.

INCENTIVES

The more you volunteer, the more recognition you receive!

2 hours

Recognition in the Parks & Recreation Activity Guide and on indianolaparks.com
Free August pool party

5 hours

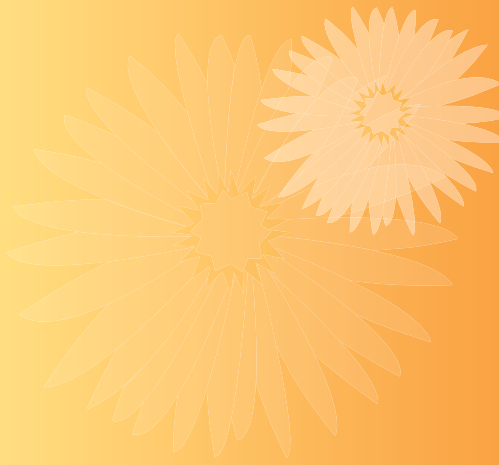
Certificate suitable for framing

10 hours

Free current year Park Partners t-shirt
(Incentives may be added to or changed.)

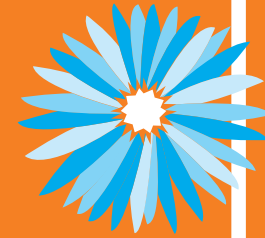
WHY VOLUNTEER

- * to help keep Indianola parks and flowerbeds in top condition
- * to give back to the community
- * to be an active part of our community
- * to have fun
- * to learn
- * to keep active



Indianola Park Partners
Indianola
PARKS AND RECREATION
2204 W. 2nd Avenue
Indianola, IA 50125

indianola PARK PARTNERS



*Volunteer opportunities
with the Indianola Parks
to enhance our community
through beautification*



**“HE DOUBLES HIS GIFT
WHO GIVES IN TIME”**

Remember how good it felt the last time you helped someone?

The Indianola Park Partners program offers everyone in our community the opportunity to feel "that good".



HOW TO GET INVOLVED

It's quick & easy to become a Park Partner!

You can call or email, sign up online or fill out this form and return it to Indianola Parks & Recreation. Staff will promptly contact you to confirm details.

In the table at right, please place a checkmark next to the area(s) in which you are interested.

Your Name _____

Daytime Phone (_____) _____

Evening Phone (_____) _____

Email Address _____@_____

Indianola Parks & Recreation
 2204 W. 2nd Avenue
 Phone (515) 961-9420 | Fax (515) 961-9426
 parkrec@cityofindianola.com | indianolaparks.com

✓	Area	Tasks	Time Commitment	Time & Day	Season	Special Notes
	Greenhouse	Transplant seedlings	1 hour & up	Monday - Friday 8am - 3pm	March & April	Must be able to sit or stand for extended lengths of time
	Adopt a Flower Bed	Plant and/or weed and deadhead	30-60 minutes per week	Any time Any day	Mid-May thru Mid-October	Must be able to bend over or kneel
	Annual Beds	Plant and/or Weed and deadhead	Weekly, bi-weekly, monthly or once. Minimum 1 hour.	Any time Any day	Mid-May thru Mid-October	
	Perennial Beds	Plant (One-time only) Weed and deadhead	Weekly, bi-weekly, monthly or once. Minimum 1 hour.	Any time Any day	Mid-May thru Mid-October	
	Square Planters	Plant and/or Weed and deadhead	Weekly, bi-weekly, monthly or once. Minimum 1 hour.	Any time Any day	Mid-May thru Mid-October	
	Rose Beds	Plant and/or Weed and deadhead	Weekly, bi-weekly, monthly or once. Minimum 1 hour.	Any time Any day	Mid-May thru Mid-October	
	Flower Pots	Plant and/or Weed and deadhead	Weekly, bi-weekly, monthly or once. Minimum 1 hour.	Any time Any day	Mid-May thru Mid-October	
	Bushes/Shrubs	Trim, prune	Bi-weekly or monthly	Any time pre-arranged	April - October	Training provided by Indianola Parks & Rec
	Tree Mulching	Put mulch around trees	2-4 hours	Any time Pre-arranged	April - October	
	Tree Planting	Plant trees	1 hour & up	Some weekdays Some weekends Some evenings	April - October	Arbor Day planting in April. Other plantings scheduled as projects arise.
	Sand/Mulch Raking	Level sand or wood chips around play equipment	Weekly, bi-weekly, monthly or once. Minimum 1 hour.	Any time Pre-arranged	April - October	
	Shelter Painting	Paint park shelter Sand/scrape if needed	4-8 hours	Any time, any day Pre-arranged	April - October	
	Fall Clean Up	Clean annual beds Leaf raking	2-4 hours	Any time, any day Pre-arranged	After October 15	
	Spring Planting Blitz	Planting flowers	2 hours minimum	M-Th 2-7:30pm Fri & Sat 9am-3pm	Usually 2nd week of May	Inclement weather may postpone planting a week.

"NO ACT OF KINDNESS,
 no matter how small,
 is ever wasted." ~AESOP